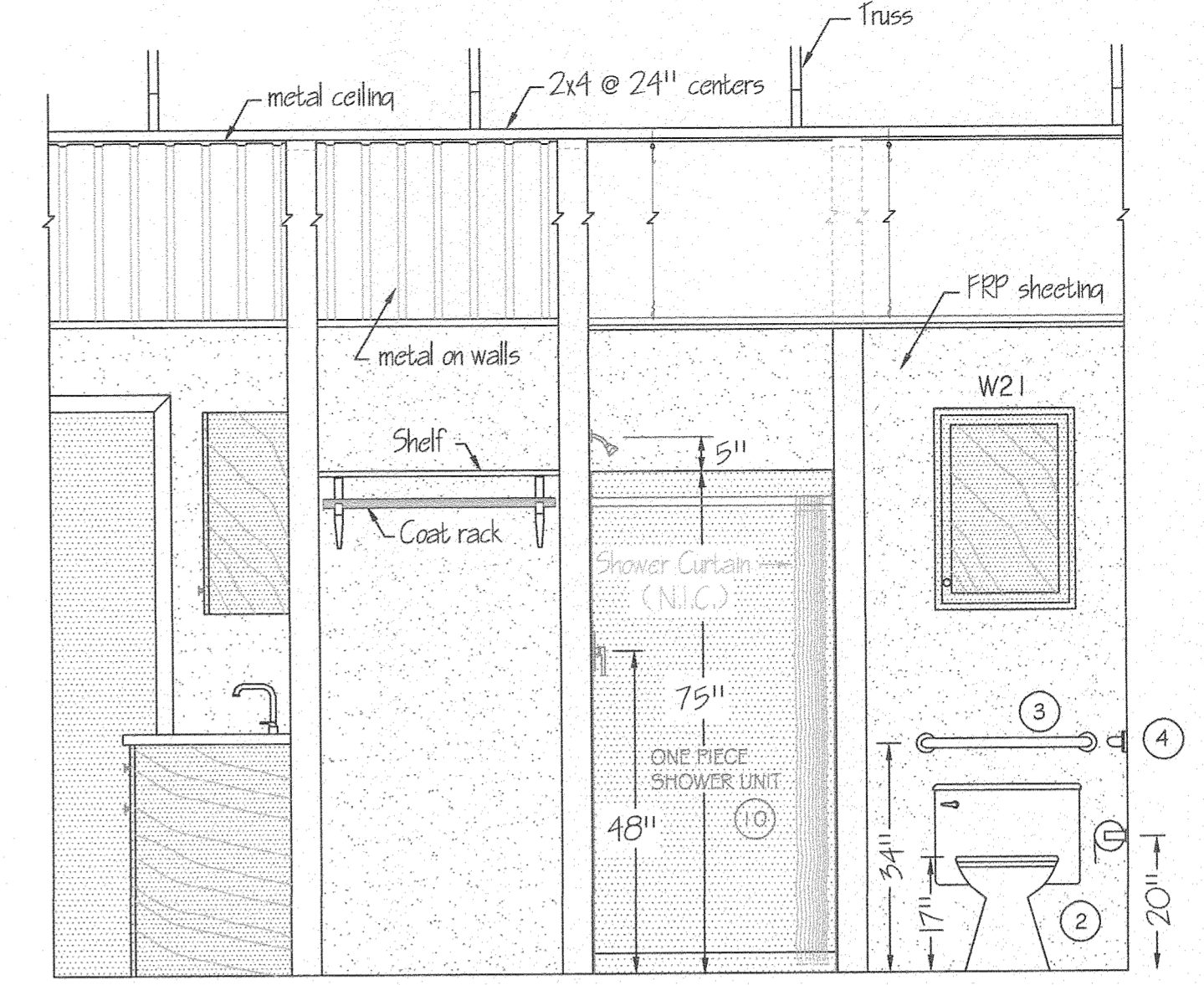
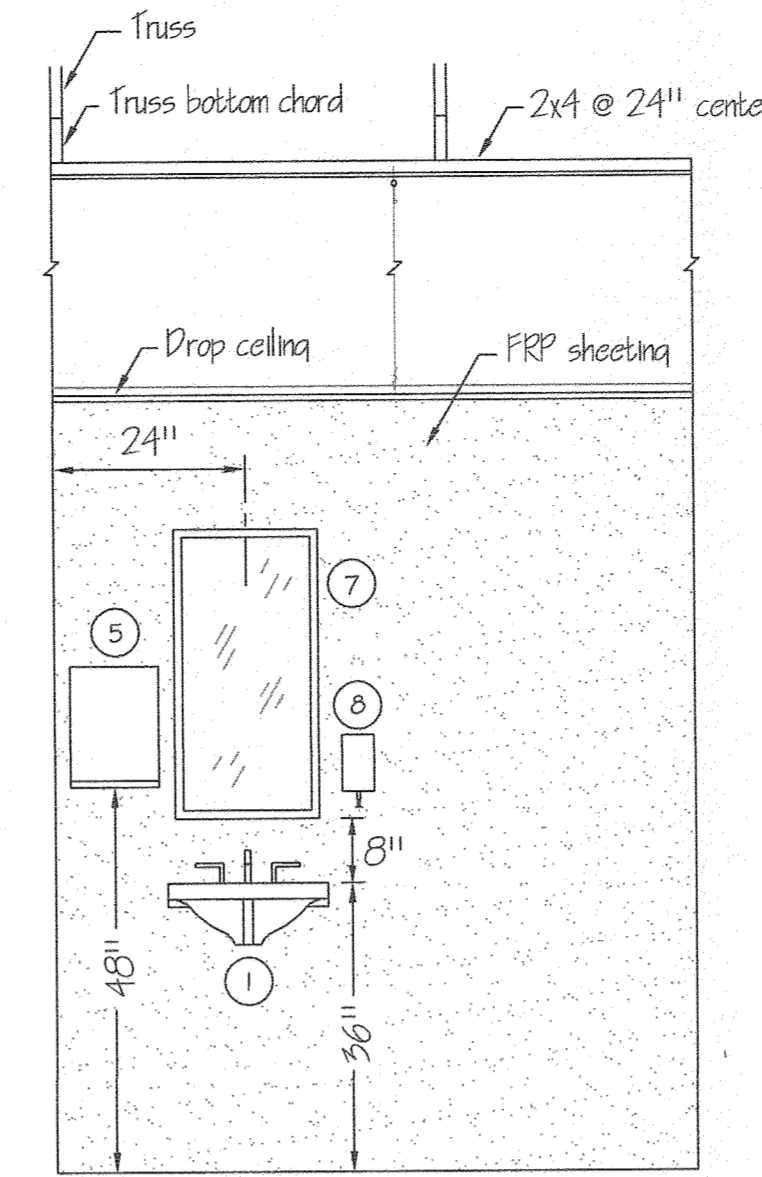
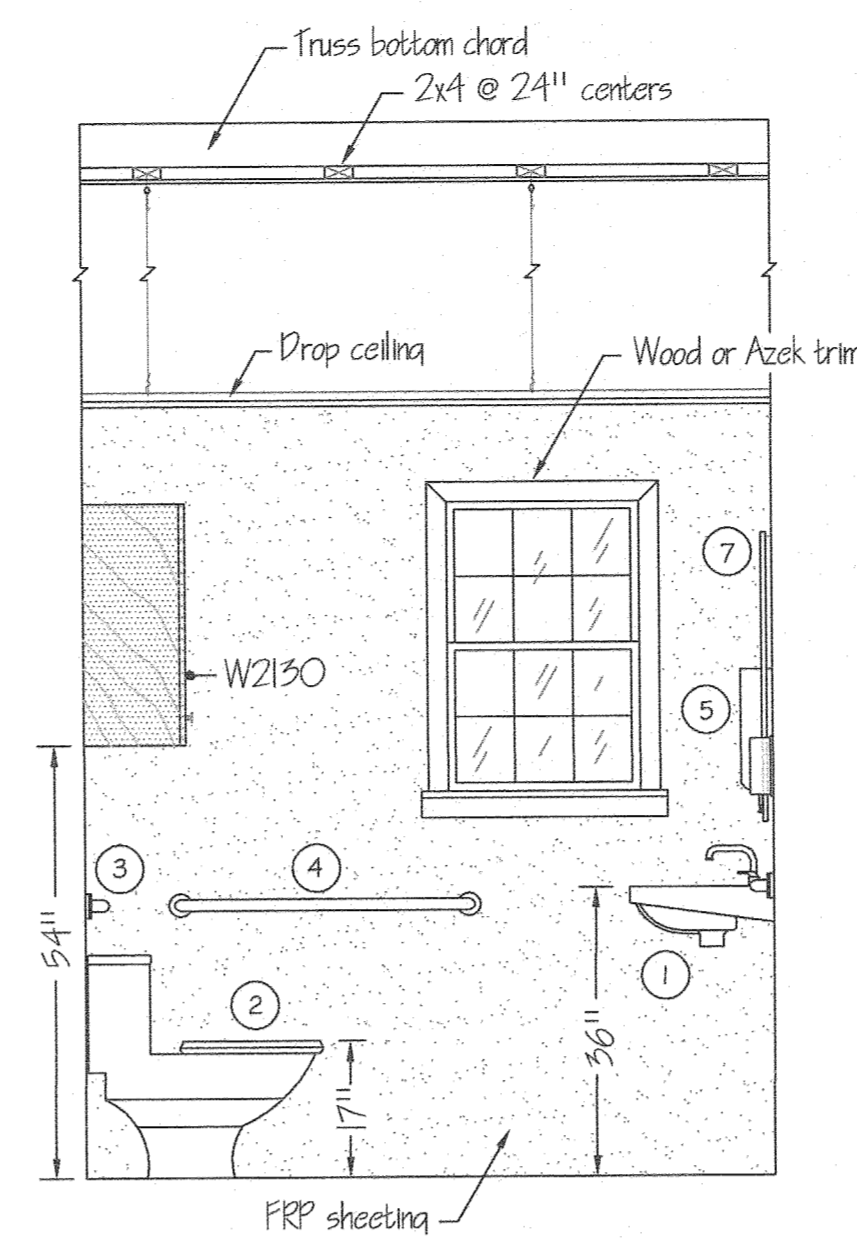
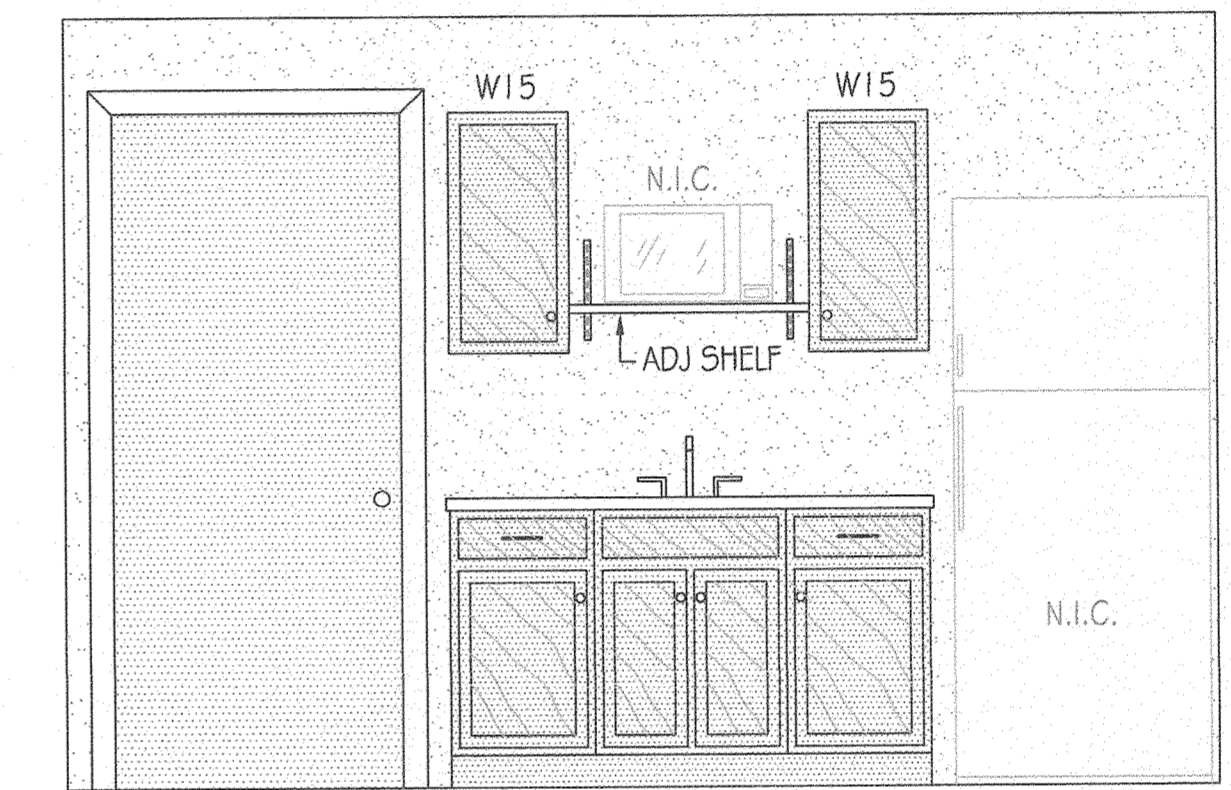


**BRADLEY CORP. (FOR REF. ONLY)
FIXTURE/ACCESSORY LEGEND**

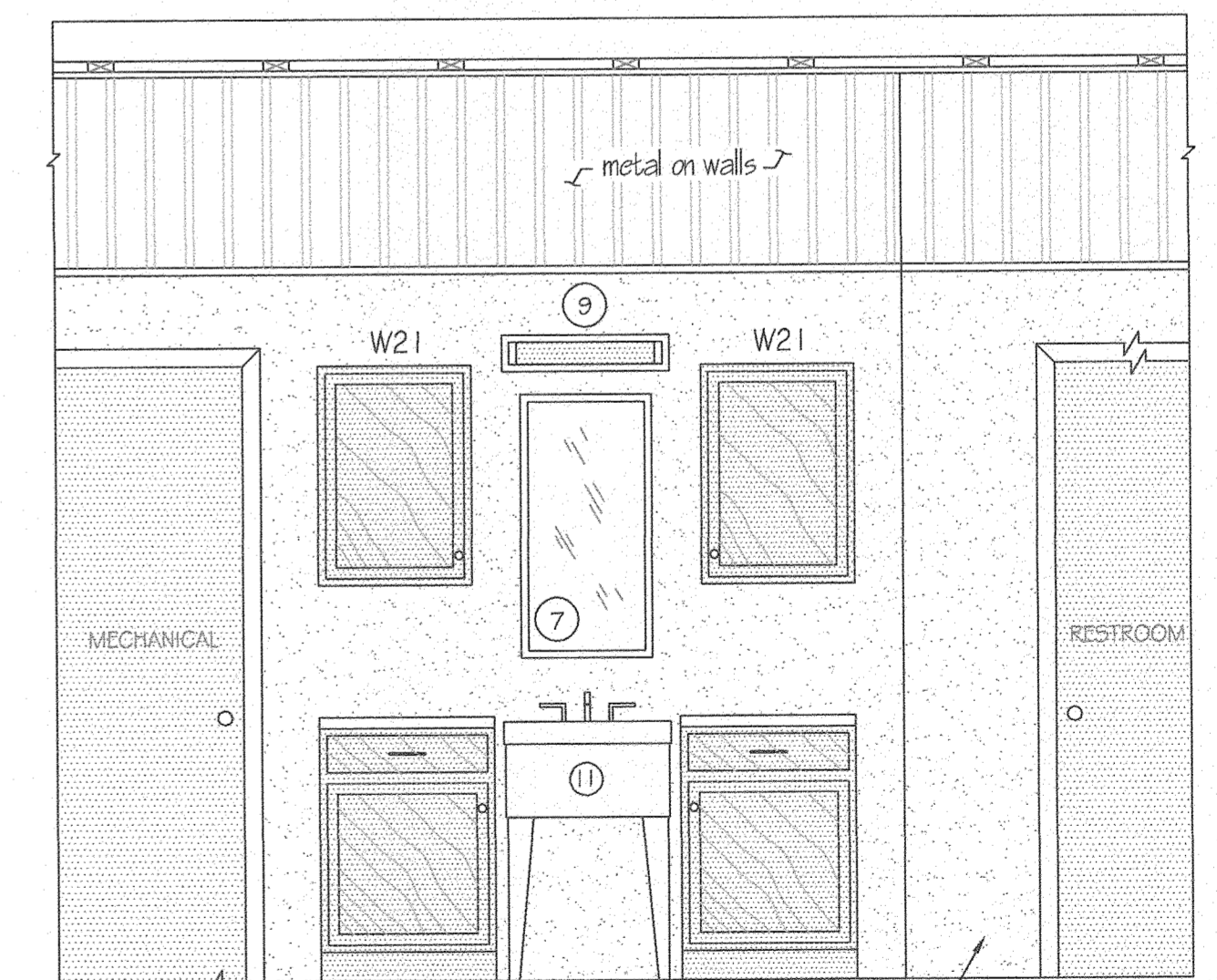
- ① SINK (W/FAUCET) MODEL 812
- ② FLOOR MOUNTED WATER CLOSET MODEL 812
- ③ GRAB BAR (24" LONG) MODEL 250-15
- ④ GRAB BAR (36" LONG) MODEL 508
- ⑤ TOWEL DISPENSER MODEL 780-183G
- ⑥ TOILET TISSUE HOLDER MODEL 655
- ⑦ 18" x 36" MIRROR 2" INTEGRATED LED
- ⑧ SOAP DISPENSER GEL-COATED FIBERGLASS
- ⑨ LIGHT FIXTURE SEE SPECS
- ⑩ ONE PIECE SHOWER UNIT
- ⑪ UTILITY SINK (W/FAUCET)



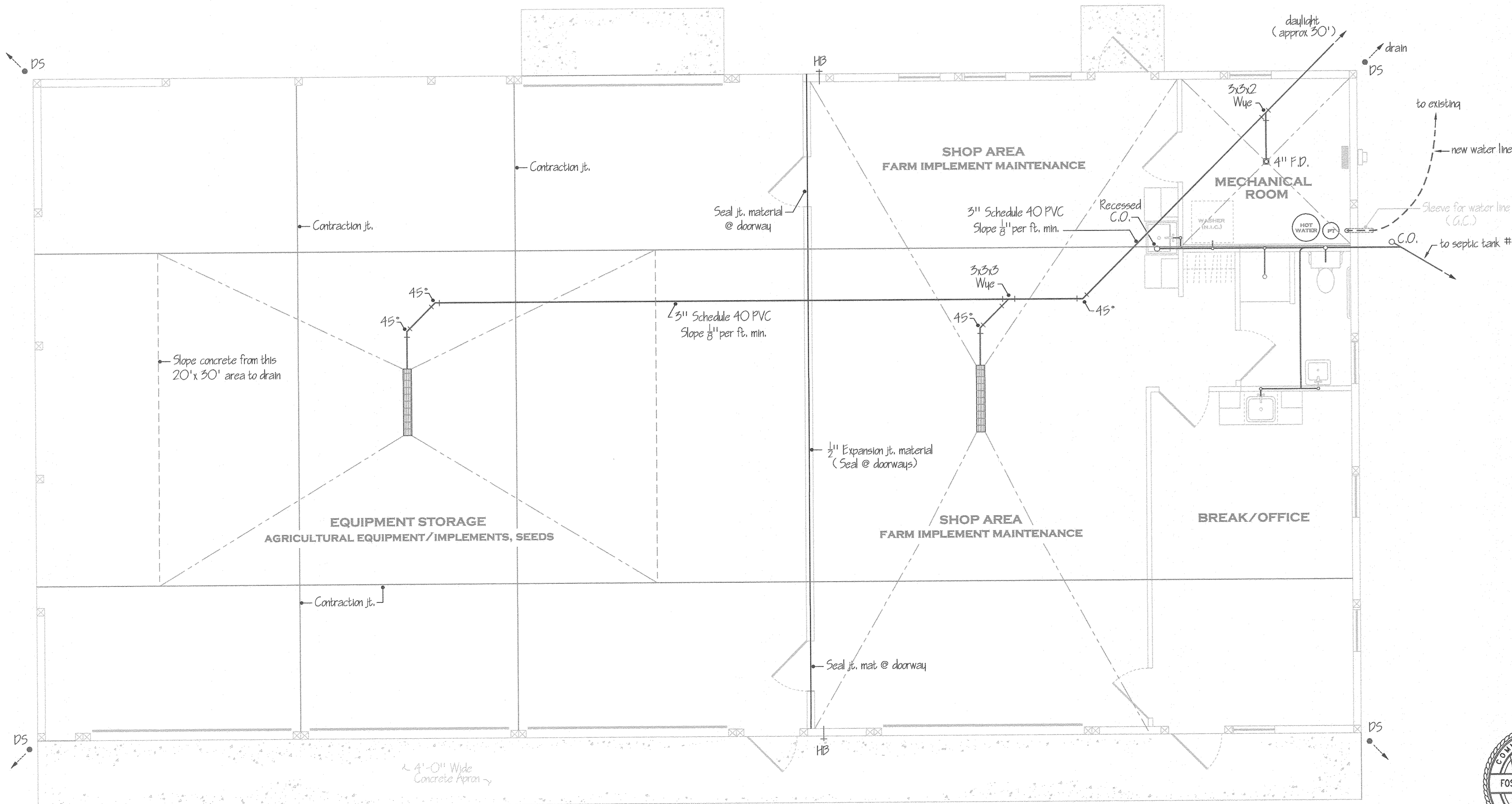
RESTROOM ELEVATIONS
SCALE: 1/2" = 1'-0"



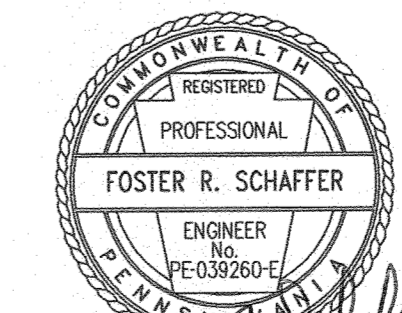
BREAK/OFFICE
SCALE: 1/2" = 1'-0"



UTILITY AREA
SCALE: 1/2" = 1'-0"



PLUMBING PLAN
SCALE: 1/4" = 1'-0"



Foster R. Schaffer
11/25/19

| PENNSYLVANIA GAME COMMISSION | | |
|-------------------------------|-----------------|----------------|
| STATE GAME LANDS #248 | CHERRYHILL TWP. | INDIANA CO. |
| PLUMBING AND BATHROOM DETAILS | | |
| REVISIONS | PROJECT NO. | PCC-248-19-2 |
| ▲ | DRAWING NO. | 248-PLUMBING-4 |
| ▲ | DRAWN BY: | JBM |
| ▲ | DATE: | 11-25-19 |
| ▲ | SHEET NO. | 4 OF 5 |